

Sample Received: **March 30, 2026**

COA Issued: **June 6, 2026**

## PRODUCT INFORMATION

Vendor: <b>Neurovia</b>	Sample Name: <b>Klow Blend</b>	Sample Type: <b>Blue lyophilized powder</b>	Lot Number: <b>KLOW042026-80</b>	MW (g/mol): <b>342, 403, 1419, 4964</b>
----------------------------	-----------------------------------	--	-------------------------------------	--

## ANALYTICAL METHODS

**Identity:** Confirmed via MALDI-MS

**Purity:** RP-HPLC (214 nm)

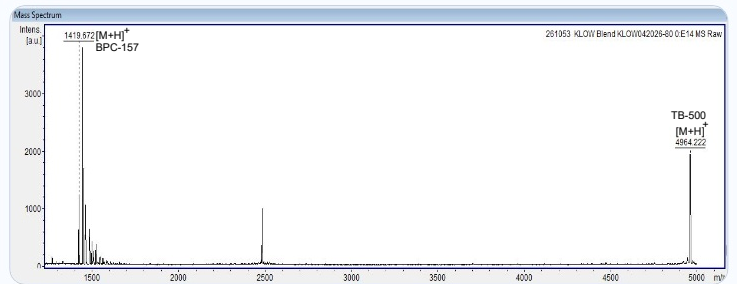
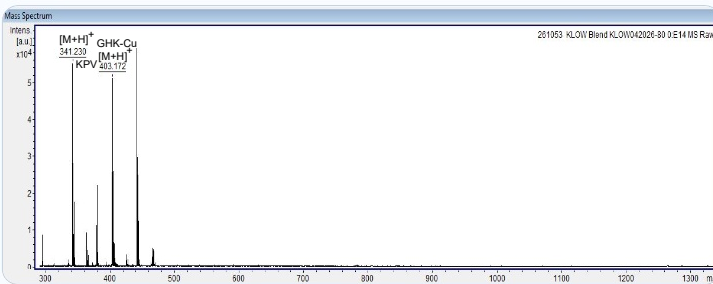
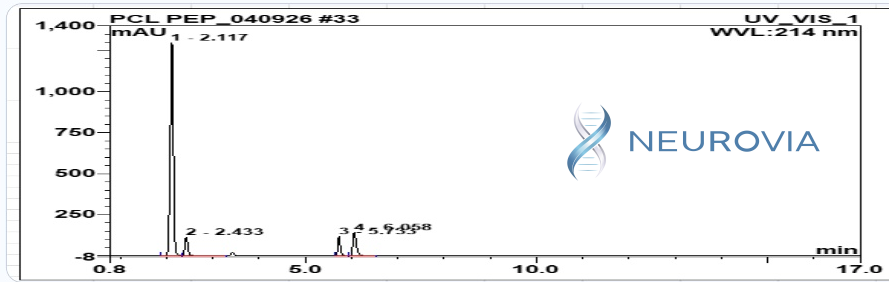
**Content:** HPLC quantitation

## TEST RESULTS

Specification	Result	Method	Status
Identity: Klow Blend	KPV, GHK-Cu, BPC-157, TB-500	MALDI-MS	✓ Conforms
Content		HPLC Quantitation	✓ Conforms
Overall Purity	99.8%	RP-HPLC (214 nm)	✓ Conforms
Heavy Metals	<0.001 ppm	<USP231>	✓ Conforms
Endotoxin	<0.005 EU/mL	<USP85>	✓ Conforms

## ANALYTICAL DATA

**HPLC Chromatogram (Retention Time: 2.117, 2.433, 5.733, 6.058 min)**



**Certification:** This COA confirms that the tested material meets or exceeds Bioviridian’s analytical quality specifications for peptide research use.

Visit: <https://bioviridians.com/coa-search.html>



*Shane Straight*  
**Shane Straight, M.S.**  
 Principal Chemist, Bioviridian Inc.